

THE NAARVA



VOICE

VOLUME 26 ISSUE 2

©NAARVA All Rights Reserved

SPRING 2026

From The President's Desk...

NAARVA Regional Rallies and Safe Travels Ahead

As we prepare for another exciting season of NAARVA events, I want to welcome everyone who will be traveling to join us across the country. Our rallies are a wonderful opportunity to reconnect with friends, meet new members, and enjoy the fellowship that makes NAARVA feel like family.

We look forward to seeing members at our upcoming regional rallies:

Southern Region Rally — Margartaville RV Resort, Breau Bridge, LA - April 19-26, 2026.

Eastern Region Rally — Coastal Georgia RV Resort, Brunswick, GA



April 26 — May 3, 2026.

Western Region Rally — Ko-Kwel RV Resort & Casino, North Bend, OR - June 2-7, 2026.

Central Region Rally — The Cardinal Center, Marengo, OH - June 7-14, 2026.



Rodney Thompson
**President
National African
American
RVers Association**

As you make your travel plans, we offer traveling grace to ail members on the road. May your journeys be safe and your travels smooth.

We encourage everyone to remember our partner RV resorts when planning your trips. Supporting the locations that support NAARVA helps strengthen the relationships that make our rallies and events possible.

Safe travels, and we look forward to seeing you down the road.

Rodney Thompson



ELKHART JAZZ FEST

We will also gather for the Elkhart Jazz Festival Experience in Elkhart, Indiana from June 18-21, 2026.



NAARVA Executive Board 2025 - 2027



RODNEY THOMPSON
President



BRIAN K. SKIPPER
1st Vice President



IRIS RAINES
2nd Vice President



ELAINE STANDIFER
General Secretary



JANICE CAMPBELL
Asst. Gen. Secretary



JAMES CAMPBELL
Financial Secretary



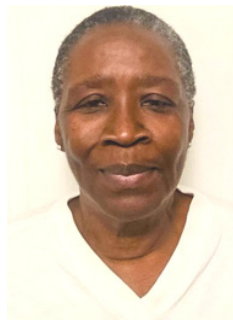
ALBERTA WILLIAMS
Asst. Fin. Secretary



SARAH RUNNELS
Treasurer



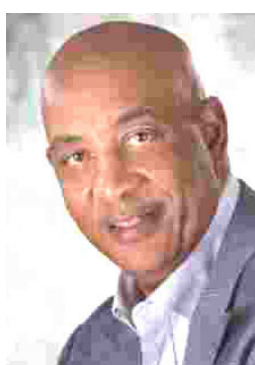
ANDREA JOHNSON
"AJ" HARVEY
Assistant Treasurer



LINDA TRILEUR
Director, Eastern Region



VENSON H. MILLER, SR.
Director, Southern Region



CHUCK BRYANT
Asst. Director
Central Region



LIZ HEMINGWAY
Director, Western Region

Appointed Positions

Rev. Garland Scott
National Chaplain

Connie Malone
Parliamentarian

Jean Hampton - *Ecologist*

Ronald (Ron) Standifer -
Historian

Mila Turner
Public Relations Coordinator

Iris Raines
*Constitution &
By-Laws Chair*

Joellen Davis
National Scholarship Chair

Iris Raines
Benevolent Coordinator

Lonnie Fyles
Nominations/Elections

James H. Gregory, Jr.
*NAARVA Voice Editor
(Newsletter)*

Working closely with the Executive Board, Appointees will perform duties that complete many functions.

VOLUNTEER OPPORTUNITIES FOR MEMBERS

The NAARVA President is responsible for appointing volunteers for various committees, and you may be called upon, please think about serving when it's your time to serve.

Letter from the Editor. . .

Unlike you NAARVA members living in the midwest, and upper eastern coastline, we here would like to have at least a month of the weather you are having. To say it is dry here is a major understatement. Resorts that prided themselves on finally closing for the season in late June have now shut down in mid-March. The lawn zealots of us are looking with dismay at brown lawns that may not get any better this season. Hell, the nearby city already has watering restrictions! With fuel prices and the associated churn around it, even our camping getaways may get limited, or at a minimum cut back. But through it all we can still look ahead with hope to the camaraderie of our local chapters, and the anticipation of our regional rallies to help get us through this time.

In this edition of the *VOICE*, our President calls out our full list of regional rallies, and reminds us to support our NAARVA partners. Education elicits the upcoming NAARVA Scholarship competitions, and Reverend Scott reminds us to pray [we definitely need it]. In specific regional sections there are reminders of their upcoming regional rallies. Also, in the Central Region we mark the passing of a pioneer, James “Dr Daddio” Walker. Lastly, we get the next installments of the NAARVA Ecology Program, and the quarterly “Looking Ahead” listings of celebrations and club events. As always, *Thank You* all for your participation!



**here comes
the sun**

James

Partner with NAARVA: Reach a Thriving RV Community!

NAARVA is the largest network of African American RVers and our National Camp Rally is the perfect place to showcase your brand. Sponsorship opportunities offer direct access to an engaged audience of travelers and outdoor enthusiasts.

Brand exposure at national and regional events as well as online.

Direct engagement with our members.

Marketing across NAARVA's platforms.

Sponsorship levels available for all budgets!

Learn more:

[2026 Sponsorship Campaigns](#)

Become a Sponsor:

[Sponsorship](#)

[Commitment](#)

Contact:

mila.turner@naarva.com

Education Station



Joellen Davis
NAARVA
Scholarship
Committee
Chairperson



ATTENTION! Graduating High School Seniors! NAARVA WILL STILL SUPPORT OUR YOUTH WITH THE FINANCIAL OPPORTUNITY OF A NAARVA SCHOLARSHIP!

The 2026 NAARVA Scholarship applications will be posted on the NAARVA website, NAARVA.com by the end of March, 2026, Check your E-mails for a "Constant Contact" follow-up as well. Don't miss out on this Financial Opportunity!

As the Scholarship Committee Chairperson, I am proud to say that NAARVA is hopeful to award the full complement of six Scholarships for the upcoming year - (4 - \$1,000.00 Scholarships and 2- \$500.00 Scholarships).

Spread the word!

Easy Way to Pay NAARVA Dues!

Paypal provides an easy way to pay your dues and Charter Renewals.

Check it out at

naarva.com

Join Our NAARVA Group



The function of education is to teach one to think intensively and to think critically. Intelligence plus character — that is the goal of true education.

- Martin Luther King

NAARVA Partnerships



LOG INTO THE NAARVA MEMBERSHIP PORTAL FOR INSTRUCTIONS TO REDEEM OUR EXCLUSIVE PERKS!



10% OFF RESORT BOOKINGS



10% OFF +
FREE TIRE SERVICES



10% OFF ALL CAMPGROUNDS



FREE RV NIGHT OR 20% OFF STAY



DISCOUNTS ON RV ITEMS &
REPAIR/MAINTENANCE



10%+ OFF ALL CAMPGROUNDS



4 MONTHS FREE MEMBERSHIP



\$50 OFF RV TANK CLEANING

How to Submit Articles to The Voice

If you want to share news from your Club, or have something to say about RV'ing, E-mail your information to your Regional Director. **The deadline for the VOICE content submissions for Summer 2026 issue is June 10, 2026.**

NAARVA members may access *The Voice* through the NAARVA website: www.naarva.com.

If you do not have an E-mail account or access to a computer, call 704-333-3070, and a hard copy will be mailed to you. *The Voice* is published four times yearly by NAARVA.

Voice Editor: James Gregory imscholar2@cs.com.

As an ongoing practice all attempts will be made to post the next NAARVA VOICE edition in the first week of the month following the submission deadline month. The Spring NAARVA VOICE will be posted during the first week of April 2026.



The Power of Prayer

Effectual fervent prayer.

James 5:16.

“Confess your faults one to another, and pray one for another, that ye may be healed. The effectual fervent prayer of a righteous man availeth much.”

The first movement of this verse calls us to be in an uncomfortable place to confess our sins in front of one another. In a world that rewards us for curated perfections and filtered lives, James demands a radical honesty. He isn't just talking about a private whisper to God; he instructs us to speak our faults to one another.

There is a specific kind of healing that only happens when our secrets are brought into the light of a safe, faithful, spiritually filled community. When we mask our struggles, we isolate ourselves from the very body of Christ, preventing the Holy Spirit, the spiritual mechanism designed to support us, from doing His works in and around us. By confessing, we break the power of shame and invite others to help us carry a burden that was never meant for one set of shoulders.

Once the truth is on the table, the action shifts from speaking to praying;

James connects our healing directly to our intercession. This suggests that our spiritual well-being is tied to one another. We are not just a collection of individuals; we are a spiritual ecosystem.

Salvation or healing isn't just about the soul's eternal destination, but the restoration of the whole person, mind, body, and spirit. It reminds us that prayer is the most practical thing we can do.

This part is very important; when an individual shares a fault or a need, they hand the congregation a piece of their soul. To take that vulnerable personal confession and turn it into gossip or mockery is more than just a social slight; it is a spiritual betrayal.

James emphasizes that we pray for one another so that we may be healed. If the congregation chooses to laugh or whisper instead, they are effectively blocking the channel of healing that God intended to flow through them.

Gossip creates a closed-door environment where people hide their pain to survive, whereas prayer creates an open-heart environment where people reveal their pain not just for a physical recovery but most importantly a spiri-

REV.
GARLAND
SCOTT
NAARVA
Chaplain



tual recovery; a new relationship with God.

The church is a single body. If one limb is wounded, the rest of the body doesn't mock the injury; the immune system rushes to the site to protect and repair it. Prayer is the spiritual immune system of the church. When the congregation comes together to pray for an individual, they are forming a hedge of protection around that person. They are saying, “Your struggles are now our struggles.” This collective intercession shifts the atmosphere from judgment to grace, making it a safe place for the righteous man to exercise the effectual, fervent prayer James describes.

The reason the congregation must pray rather than talk is that words of gossip have the power of death, while words of prayer have the power of life. Proverbs 18:21: *“Death and life are in the power of the tongue: and they that love it shall eat the fruit thereof.”*

Integrating this verse into our intercession prayers is a sobering realization about the weight of our words. The scripture warns us that *“Death and life are in the power of the tongue; and they that love it shall eat the fruit thereof.”* This isn't just a poetic observation; it is a spiritual law that governs the health of our community and the effectiveness of our prayer.

Solomon tells us that our speech is like a seed planted in a garden. Every time a member of the congregation opens their mouth to speak about someone in need, they are planting something. If we choose to gossip,

(Continued on page 6)



Power of Prayer...

(Continued from page 5)

mock, or belittle a struggling brother or sister, we are planting seeds of death. The “fruit” of the speech becomes a harvest of shame, isolation, and a broken spirit for the person in need.

However, when we choose to plant seeds of life, we plant seeds of restoration, strength, and spiritual healing of the soul. We must ask ourselves as a body: which fruit do we want to eat? A church that feasts on gossip will eventually starve for lack of God’s presence, but a church that feeds on prayer will flourish in His grace.

Mockery isolates the individual, pushing them further into the fault they confessed. Prayer, however, integrates them back into the fold. When a group prays for one person, it humbles the entire room. It is impossible to feel superior to someone or laugh at their misfortune while you are sincerely asking God to show them mercy. Prayer forces the congregation to see the individual through God’s eyes, as a person of immense value who simply needs a breakthrough.

There is a direct connection between the power of the tongue and the effectual prayer. Our tongues cannot be instruments of mockery on Mondays and an instrument of miracles on Sundays. James 3:11-12 warns his epistle that a fountain cannot send forth both sweet water and bitter. If we use our tongues to laugh at a person’s faults, we disqualify ourselves from the righteousness that makes our prayer “move mountains.” To love the power of the tongue means to respect it enough to use it exclusively for life-giving purposes. When we discipline our speech to only include that which builds up, we clear the spiritual wreckage that often hinders our prayers from being heard. The promise that those who love it shall eat the fruit thereof is a beautiful invitation for the congregation. When a spirit-led church comes together to pray for individuals rather than talk about them, the entire community shares in the harvest. When that person is healed, when their marriage is restored,

or when their addiction is broken, the whole body eats the fruit of that victory. There is no joy in the fruit of a shared joke at someone else’s expense; it leaves a bitter aftertaste and creates a culture of fear.

But there is an eternal sweetness in standing as a witness to a miracle that your own tongue helped birth through fervent prayer. We must decide today to be a people who love the life in our tongues, ensuring that every word spoken behind someone’s back is a word spoken to God on their behalf.

To love the power of the tongue means to respect it enough to use it exclusively for life-giving purposes. When we discipline our speech to only include that which builds up, we clear the spiritual wreckage that often hinders our prayers from being heard.

The moment has come for us to move beyond being hearers of the Word and to become doers of the Word. We stand at a crossroads where our tongues can either be instruments of a funeral for someone’s reputation or the tools of a miracle for their restoration. James and Solomon have laid the blueprint before us: we are called to a culture of radical protection and relentless prayer. If we want to see the much that fervent prayer avails, we must first clear the weeds of gossip and mockery from our garden.

Before we speak ill of our brother or sister, ask yourself if your words are planting seeds of life or death. If you have been part of the talking instead of the praying, today is the day to re-

pent and redirect your tongue. We must commit to being a people who love the life of the tongue, ensuring that the only time a neighbor’s name is on our breath is when we are lifting it up to the throne of God. Let us resolve that no one will ever feel the sting of our laughter when they are brave enough to show us their wounds.

The final movement in James 5:16 outlines the mechanics of a breakthrough. James describes this as not a casual, “I’ll keep you in my thoughts” kind of prayer. It is a persistent, heart-driven labor. The phrase “availeth much” literally means it has great force or “tremendously might” in its operation.

The effectual fervent prayer of the righteous is a person who is passionate and sincere. Their heartfelt prayers bring them to a righteous standing with God. God answers their prayers, granting them great power to produce significant, sometimes impossible, tangible results.

Maybe, just maybe, if the church would stop being a group of people hiding in pews and start being a spiritual hospital for the broken and use these elements; the unselfish honesty of individual confessions, the effectual spiritual-filled community praying for one another, the power of the tongues of fervent faith; they will see their prayers avaleth much to those in need.

Praise God, Praise God, Praise God.

Amen!

Please e-mail NOTICES OF MEMBER DEATHS to benevolence@naarva.com.

Please include the following in your e-mail:

- Deceased Members’s Full Name
 - NAARVA Number (if known)
 - Region and Club Name
 - Date of Death (Month, Day, Year)

Iris Raines, NAARVA 2nd Vice President, is the Benevolent Coordinator.



Central Region Rally - June 7-14, 2026



**The Cardinal Center
616 State Route 61, Marengo, OH 43334**



CENTRAL REGION

From the Desk of Sylvia Allen...

Hello Central Region Presidents and members. Due to current circumstances, I have decided to step down as Central Region Director. My term ends in June so this is three months earlier than I had intended.

It has been my pleasure serving as your Central Region Director and serving on the National and Central Region Boards for the past 10 years. I want to thank each of you for your support and friendship over the years. I will (still see you at Rallies, club outings, and Gary and I look forward to connecting with you anytime you come to Minnesota.

I leave you in good hands with Chuck Byrd and the Central Region Executive Board.

Sylvia Allen
Director,
Central
Region



Sylvia Allen

Remembering James "Dr. Daddio" Walker April 24, 1939 - January 26, 2026

The *Rocky Mountain RV Rollers* lost a valuable member, **James "Dr. Daddio" Walker**. "Dr. Daddio" passed away on January 26, 2026, almost seven years following the passing of the love of his life, and childhood sweetheart, Pat Walker, in 2018. Pat and Jim (Dr. Daddio) had been married for 60 years. They joined the Rollers in June, 2009 at our NAARVA — Central Region Rally in Fountain, Colorado.

The years that followed after Pat's passing were very difficult for Dr. Daddio, as they had "traveled the world together and worked together creating several businesses." The most notable business was owning and operating Denver Radio Station KDKO AM 1510. Many of us in the Denver area grew up listening to KDKO. Dr. Daddio was the first African American to independently own a radio station between the West Coast and Kansas City, Missouri.

For nearly 15 years, KDKO was the voice of Denver's Black community under the leadership of this powerful groundbreaker. Many of Denver's greatest names, such as Mayor Wellington Webb, Hiawatha Davis, and Cleo Parker Robinson were invited to share the mic during KDKO's memorable time on the airwaves. Later on in his career, I had the fortunate opportunity to be interviewed on his Saturday afternoon "Talk Show" as he **"Highlighted the Rocky Mountain RV Rollers and NAARVA."** He promoted the Rollers activities (especially our Fish Fry Fundraiser) and encouraged the public to "check into getting an RV and joining the *Rocky Mountain RV Rollers* and travel the country in style!" Dr. Daddio also promoted NAARVA on the National level as his radio show was broadcast to areas outside of Denver. NAARVA leaders appeared on his show as well. Dr. Daddio definitely had a "Radio voice" and he would get your attention and share his views on what was happening in the Denver area and what the community needed to do to make things better for ALL.

When Dr. Daddio wrote his book on December 17, 2022, he called me while I was in Texas "snowbirding", he wanted to tell me about his book, *"Radio in My Soul: The Journey of James "Dr. Daddio" Walker."* He wanted me to have a signed copy. I was honored. When I received the book and read it, I was surprised that he had written about NAARVA, the Rollers, and our conversations on the radio! I was very touched that he thought that much about the Rollers and I in his book. Of course, I had to call him to thank him!

Dr. Daddio and Pat were very special people to me and very supportive of the Rollers and NAARVA. I worked very closely with Pat on the Central Region Board and I will never forget their friendship. Dr. Daddio can now rest in peace with his lovely wife who he missed so much. Much love to both of them! Gone, but definitely NOT forgotten!

Respectfully submitted by:
Joellen Davis, President Rocky Mountain RV Rollers



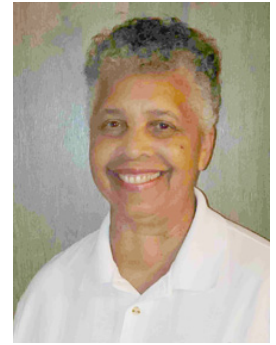
WESTERN REGION

Hi NAARVA family!

We have ended 2025 and are well into 2026. The Western Region clubs are planning their campouts for the year. In December the *California Cruisers*, *Las Vegas Rolling Wheels*, *Funseekers* and the *NorCal Family Travelers* all celebrated the Christmas season with holiday themed campouts. A wonderful time was enjoyed by everyone. Several of our new members are getting to know the warm fellowship we enjoy by camping together.

Our plans for the Western Region Rally are in full swing. We are honored to have members from other regions attending our rally. We will make them feel right at home. Hope to see you there!

**LIZ
HEMINGWAY
Western Region
Director**



*Our
Planning
Session
during the
holidays.*



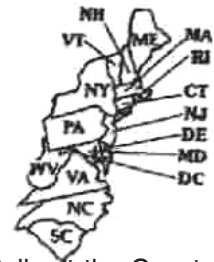
2026 Western Region Rally "Rv'ing On The Bay" June 2nd – June 7th, 2026



**Ko - Kwel RV Resort & Casino
3201 Tremont Ave
North Bend, Oregon**



NAARVA EASTERN REGION National African American RVer's Association



EASTERN REGION CAMP RALLY April 30 - May 3, 2026

Linda Tailleur
Director

Michael Terrell
Asst. Director

Jacqueline Glover
Recording Secretary

Lisa S. King
Financial Secretary

Angelico Braithwaite
Treasurer

Belinda Moore
Corresponding Secretary

William Christmas
Parliamentarian

Baugh Threnodiez
Constitution and
By-Laws

Lola Porter
Scholarship

Thomas Turcker
Coordinator of
Members-at-Large

Cheryl McNeil
Chaplain

Donald Tolleut
Sgt.-at-Arms

William Christmas
Web Master

Charles Simmons
Photographer

York Winns (DJ Mike)
Eastern Region DJ

Welcome Rally Attendees to the 2026 NAARVA Eastern Region Camp Rally at the Coastal Georgia RV Resort Brunswick, GA, Thursday, April 30th through Sunday, May 3, 2026. If you wish to enter the resort before April 30, 2026, we are offering Early Bird admission commencing Tuesday, April 28th through Wednesday, April 29th. Please see registration form for fees and indicate your desired dates and amount.

A menu selection form is included in the registration packet. Meals will be distributed at your designated time There will be NO substitutions. Your name tag must always be worn, especially when picking up meals.

Coastal Georgia RV Resort, located in Brunswick, Georgia, offers 163 spacious sites, all 35 feet wide, with lengths ranging from 60 to 79 feet. There are 11 Lakefront, and 8 Endcap sites available on a first-come/first-serve basis. All other sites are Standard Buddy pull through sites with full hookups including 30 & 50 amp service and picnic tables. The resort also has Cable TV and Wi-Fi, swimming pool, game room, 3 bathhouses, 3 laundromats, and a K9 corner. There is a store where you can find RV supplies as well as LP gas. The entire resort is handicap accessible. Bring your fishing rods and enjoy fishing on the lake. Shuffleboard Court and horse-shoe pits are available. Resort check-in time begins at 12 noon. The departure time is 11:00 a.m. Do not attempt to enter the resort before your paid arrival date as your RV site may not be available.

There are many things to do and see locally within a few miles of the resort. These attractions include Historic Downtown Brunswick, Jekyll Island, St. Simons Island, and Cumberland Island. We are planning several games for your fun and excitement including card tango and bean bag baseball. So, bring a chair, your "A" Game and prepare to claim bragging rights. Lip sync and karaoke are back, so start working on your performance. Sign-up sheets will be located at the registration table. Also come ready to participate in the cake walk for delicious treats. Club members/persons who wish to park together must put their club's/person's name on their registration form to ensure that you are parked together. You will not have to send in your registration form together or arrive together. If you do not specify a name or club on your registration form, we cannot guarantee that you will be parked together.

As we enter into another year of camping, we appreciate your continued commitment to NAARVA Eastern Region by ensuring that your Eastern Region membership dues are up-to-date by March 1, 2026.

We look forward to seeing you at this rally as there will be fun, fellowship with family and friends as we make our way to Georgia. Please stay safe during your camping adventures.

Respectfully Submitted, Linda Tailleur, Director, NAARVA Eastern Region

(Complete registration packet on Eastern Region Website)



NAARVA



Southern Region Camp Rally April 19-26, 2026

SOUTHERN REGION EXECUTIVE BOARD MEMBERS:

VENGDH WILLO,
DIRECTOR

Pats Clayton
Assistant Director

Audie Judditt
Secretary

Lynda Daniel
Assistant Secretary

Ray Rames
Treasurer

Alexis Miller
Financial Secretary

Joe Hillig
At-Large Liaison

Fellow RVers,

I am excited to share plans and invite you to join us for the 2026 NAARVA Southern Region Camp Rally April 19-26, 2026 at Camp Margaritaville RV Resort, in Breaux Bridge, Louisiana. Our theme this year is **"Making Memories"**. It's my honor to invite you to come make memories with us!

We have worked diligently to ensure favorite rally activities like line dancing, bean bag baseball, golf and fishing tournaments and card game competitions are included in the schedule. We have planned special events like a casino bus-trip, crafts, nightly bike rides, an RV Swap Meet and informational sessions that are relevant for all RVers.

Camp Margaritaville provides leveled, oversized sites with concrete pads equipped with individual hook ups for water, sewage, and electricity.

Take time to review this informational packet and get ready for a week of fun, relaxation, and memory making! All – NAARVA members and non-NAARVA members are welcome and encouraged to come make memories with us!

Look forward to seeing you April 19 – 26, 2026!

Complete package on Southern Region Website.



NAARVA ECOLOGY PROGRAM

"Loving Our Earth - Reduce, Reuse, Recycle, Respect"

NAARVA Committed to the Resolve of Plastic Pollution

Jean Hampton, Ph.D., NAARVA Ecologist



NAARVA Ecology Program

"Loving Our Earth: Recycle, Reduce, Reuse, Respect"

EARTH DAY April 22, 2026

Waste, Recycling, and the "Circular Economy"

TRASH... the very word itself is arguably repulsive, promptly describing a rejection of whatever... things, events, and even quite offensively, people.

Unregulated trash can indeed become an environmental problem. And from the ecological perspective, trash A.K.A. "waste" is now a globally observable and measurable problem, presenting adverse environmental impact that must be attended to.

There is an old saying, "*Waste not... want not*". This proverb carries significant meaning that addresses opportunity to avoid disturbances in our planetary environmental balance that is required for sustainability of life. Human life, plant life, animal life, terrestrial life, marine life... life that we are just discovering as we comb the deepest and unexplored portions of our oceans. Our handling of waste itself is not limited to our tossing trash in the garbage when we are done with it. What matters is how effectively we handle or process waste... from its production to its employ and finally to its discharge.

Products that humans use are separated into three categories called goods.

(1) Durable goods, lasting three years or more; including major and small appliances, carpets, furniture, tires, batteries (lead acid), consumer electronics and other miscellaneous products such as luggage and sporting equipment

(2) Non-durable goods, lasting less than three years including paper and paperboard items, plastic plates, cups and other disposable food service products, disposable diapers, clothing and footwear, linens, and such.

(3) containers and packaging, which are assumed discarded close to the product purchase dates.

"A circular economy keeps materials and products in circulation for as long as possible."

The "circular economy" is a system where materials/goods never become waste and nature is regenerated in a circular economy, products and materials are kept in circulation through processes like maintenance, reuse, refurbishment, remanufacturing, recycling and composting. The circular economy tackles climate change and other global challenges such as biodiversity loss, waste, and pollution by disassociating economic activity from the consumption of finite resources.

It is vital that we employ proven methods of waste disposal... both circular and final. We refer to previous newsletters describing the "circular economy" of materials such as plastics. In the circular economy we would employ only materials that make our end-products recyclable, and nondamaging to our environment at their disposal. So that our waste does not become "pollutants", used products should have a pre-arranged end-of-life... either consisting of a new beginning or of minimally damaging elimination,

Less waste (or controlled waste) is essential for planetary sustainability.

With wise production, use, and disposition of our used materials and products, it is unlikely that we would find ourselves lacking in resources, or lacking supportive habitat needed to provide these resources. Indeed, this achievement would sustain clean and life-supporting air, water, and habitat.

We've discussed plastics, as a ma-

ajor pollutant. We know that currently the disposition, use, and continued production of non-recyclable plastics ultimately terminates with the pollution of our air, waterways, and habitat... all of which are required for sustainable living and planetary health.

But, there are many varieties of pollution. Discarded clothing, dishware, holiday and specialized decor, eroded buildings, homes (building materials), or the remains thereof, e.g., flooring and furniture, discarded and spoiled foods, machinery, hardware, software, apparel and accessories, digital and audiovisual discards, rubbish, digestive waste and items of so many sorts... the list continues.

The USEPA tracks products to learn how people are consuming, using, and discarding materials. MSW (Municipal Solid Waste), more commonly known as trash, comprises the various items we commonly throw away. These items include packaging, food, grass clippings, sofas, computers, tires, and refrigerators.

Waste is a huge problem.

Over two billion metric tons (1 metric ton = 2,204 lbs.) of unsustainable, municipally generated waste are thrown away globally every year... entering our environment and impacting climate, wildlife, habitat, human and planetary health.



or
1 U.S. ton (2,000 lbs.) = the weight of one 1979 Volkswagen

(Continued)

Ecology...

(Continued)

The 2024 Global Waste Management Outlook, a collective effort of United Nations Environment Program (UNEP) and the International Solid Waste Association, provides an innovative scientific assessment of the impacts and costs of the growing amounts of waste to be managed, and calls for global action to prioritize waste prevention and municipal waste management services for the sake of planetary and human health.

Consumers and RVer's are central to the advancement of a protective "circular economy". We participate in this success as active buyers and users who, as such, are consciously selective toward acquisition and use of recyclable products that are durable, used, and even shared or rented. Active buyers/users are champions of waste reduction by purchasing, repairing, reusing, recycling, and properly disposing products at the end of their use. Our NAARVA NEP chorus... "Recycle, Reduce, Reuse, Respect" encompasses the elements of the "circular economy".

Consumers, by choosing to select reusable and recyclable products of companies that offer repair and refurbishment services and that use recycled materials to produce their commodities, can influence other businesses to invest in related items and services. Investment in items that can be recycled or repurposed will reduce waste, and minimize the need for sourcing new materials. This results in a circular approach that lends to less waste production, less pressure on existing natural resources such as trees, water resources, habitations, and ultimately, a more sustainable future. To support a circular economy means change in attitude and behavior at all levels... including individuals, business and government. **No one is left off the hook.** Only plants and animals are excused from this inherent responsibility. (Humans are solely responsible for our current ecological crises.) The world generates 2.3 billion tons of



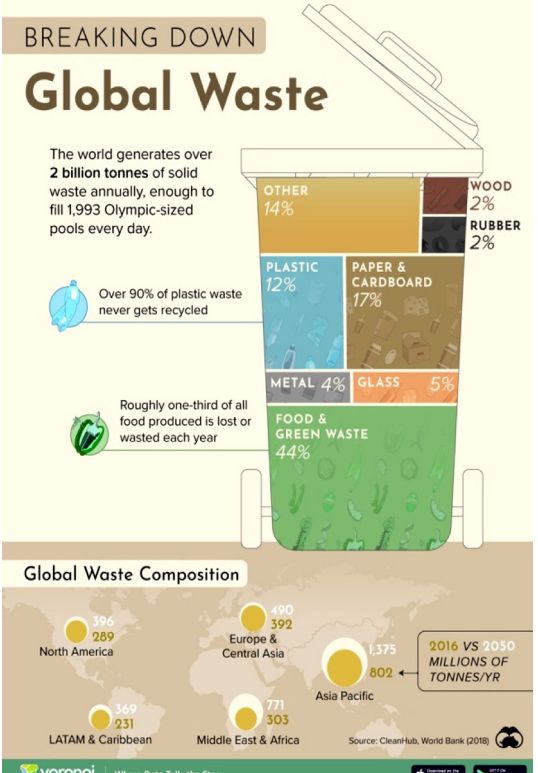
The USEPA refers to trash or MSW (municipal solid waste) as various items consumers throw away after they are used. These items include bottles and corrugated boxes, food, grass clippings, sofas, computers, tires and refrigerators, etc.

USEPA estimates a total generation of MSW in 2018 of 292.4 million tons or 4.9 lbs per person, per day.

TOGETHER, WE CAN MAKE A DIFFERENCE
SMALL CHANGES IN BEHAVIOR CAN HAVE A BIG IMPACT ON OUR PLANET!

WHEN YOU THROW SOMETHING AWAY, WHERE DOES IT GO?

IN THE UNITED STATES IN 2018, 292.4 MILLION TONS OF TRASH WERE GENERATED. 146.1 MILLION TONS ENDED UP IN LANDFILLS.



generation is expected to jump to 3.75 billion tons annually over the next 30 years. Our children, and our children's children will be bequeathed the yield of this growth as an outcome of slack and irresponsibility from our generation of consumers.

Plastics are especially problematic. If not collected and managed properly, they will contaminate and affect waterways and ecosystems for hundreds, if not thousands of years. Plastics in rivers, waterways and oceans, are a particularly growing urgent problem.

About 90% of marine debris is plastic. Poorly managed waste contaminates our oceans, clogs drains, causes flooding, transmits disease, increases respiratory problems from burning, harms animals that consume waste unknowingly, and affects economic development such as tourism.

In 2016, the world generated a whopping 247 million tons of plastic waste. We could make about 24 trillion plastic bottles out of this. Even when plastic waste is collected, many countries don't have the capacity to process the waste... leading to dumping or mismanagement of it. One study

(Continued)



U.S. Bales of used plastics



Countries with poor waste management

Ecology...

(Continued)

using World Bank data, found that between 9 to 13 million tons per year of plastic enter the ocean from land sources.

Though they only account for 16 percent of the world's population, high-income countries such as the U.S. generate about 34% of the world's waste. The U.S. produces more plastic waste than any other country, with roughly 90% ending up in landfills, burned, or shipped overseas. A significant portion of this waste is sent to countries with poor waste management systems which contributes to global pollution. When looking forward, global waste is expected to grow to 3.75 billion tons by 2050, which is more than double the population growth over the same period.

In 2016, the world generated 266 million tons of plastic waste... equivalent to 24 trillion plastic bottles, weighing 3.4 million adult blue whales – the largest animal on earth, and their water volume could fill up to 4.8 million Olympic-sized swimming pools.

The U.S. produces more plastic waste than any other country, with roughly 90% ending up in landfills, burned, or shipped overseas. According to the [Plastic Pollution Coalition](#), the U.S. exported 1.07 million tons of plastic waste in 2018... about 1/3 of its recycling. Data taken from the U.S. Census Bureau shows that 78% of those exports were sent to countries with poor waste management, con-



tributing to global pollution. Major destinations have included Malaysia, Mexico, Canada, Vietnam, India, and Indonesia. These countries lack the infrastructure and regulation to effectively and sustainably sort, process, and recycle plastic waste into new materials. One study using World Bank data, found that between 9 to 13 million tons per year of plastic enter the ocean from land sources. Despite the “recycling” label on many goods, a large portion of exported plastic is difficult to process... leading to it being burned or dumped rather than recycled.

What can we do?

1. Shop green: purchase used or refurbished items... from clothing to electronics to furnishings. Thrift and resale stores, even online platforms/web sites tend to carry used and discarded items that are serviceable and at lesser expense. Flea markets are also good, and “haggling” may be permitted there.



Choose recyclable product: prefer items labelled as “recyclable” or “made from recyclable materials”; durable/recyclable items can last longer and can be resold. Buying recycled products could be considered the most important part of the cycle because manufacturers respond to what consumers demand. When people buy recycled products, recycling works.

- Focus on easily recyclable materials: aluminum, paper/cardboard, jars/bottles.
- Seek out logos indicating sustainable practices: The Sustainable Forestry Initiative (SFI) for paper products.
- Before buying consider if item is reusable, refillable, repairable, recyclable, combustible; look for post-consumer (PCR) and post-industrial (PIR) labels which indicate recyclability.
- Find out what the neighborhood curbside recycling program or nearby drop-off centers will accept and buy products they take. That way you can keep the cycle going.
- Etiquette: Handle used items with

(Continued)



Ecology...

(Continued)

care, mind the space, don't crowd the isles.

- Inspection: Inspect items thoroughly for wear and tear, offensive odors, and stains.

2. Lobby and vote - for legislation to strengthen our US recycling system and restrict plastic waste exports; We should follow the lead of the United Kingdom, where there is a bill before

Parliament to end plastic waste exports to countries with poor waste management systems.

3. Reject the purchase and use of low value single-use plastic items or packaging, such as single use polyethylene bags, foam food containers and plastic straws.

4. Encourage pet waste collection ordinances and disposal stations for pets in public parks via local governing body/animal control; pathogens are a health concern associated with animal wastes, droppings may contain

parasites; pet wastes can be flushed down toilets to secure sewage or septic tank treatment.

5. Shop in market bulk sections and bring refillable jars/containers for your rice, cereal, granola, nuts etc.

The Future of Waste

The expected increases in population, will continue to grow at a pace estimated to be almost triple that of population growth. Global population is expected to rise 25 percent from 7.5 billion in 2020 to about 9 billion people in 2050. Meanwhile, waste is expected to grow from 2.4 billion tons in 2020 to 3 billion tons by 2030 and to 4.3 billion tons by 2050 - a total increase of 73%.

References: March 2026: ellenmacarthur/foundation.org; earth day.org; datatopics.worldbank.org; epa.gov; repurpose.global; npr.org; plasticpollutioncoalition.org; world bank.org; Missouri department of natural resources; plastics recycling.org; the nature conservancy.

Looking Ahead: April, May, June 2026

Celebrations and Regional Club Events

April

April Fool's Day

Wednesday, April 1, 2026

Is an annual custom in many Western countries on the 1st of April consisting of practical jokes, hoaxes, and pranks. Jokesters often expose their actions by shouting "April Fool[s]" at the recipient.



Easter

Sunday, April 5, 2026

Easter, also called Resurrection Sunday, is a Christian festival and cultural holiday commemorating the resurrection of Jesus from the dead, described in the Bible's New Testament.

Looking Ahead: April, May, June 2026

Celebrations and Regional Club Events

April



Eastern Region

New Horizon RV Club - April 9-12, 2026

Coastal Georgia RV Resort
287 S. Port Pkwy
Brunswick, GA 31523

Tax Day

Wednesday, April 15, 2026

In the United States, Tax Day is the day on which individual income tax returns are due to be submitted to the federal government. Since 1955, Tax Day has typically fallen on or just after April 15. Tax Day was first introduced in 1913, when the Sixteenth Amendment was ratified.



Southern Region

Southern Region Rally - April 19-26, 2026

Margaritaville RV Resort
1055 N. Barn Road
Breaux Bridge, LA 70517

Western Region

Funseekers/Rain City Travelers - April 17 - 19, 2026

Premier RV Resort
4700 Salem Dallas Hwy. NW
Salem, Oregon 97304



Western Region

California Cruisers - April 22 - 26, 2026

Bonelli Bluffs RV Resort
1440 Camper View Road
San Dimas, CA 91773

Looking Ahead: April, May, June 2026

Celebrations and Regional Club Events

April



Central Region

Lake Erie Travelers - May 23 - 26, 2026

Sara's Campground
50 Peninsula Drive
Erie, PA 16505

Central Region

Rocky Mountain RV Rollers - Saturday, April 25, 2026

The Cherry Cricket
1280 E. 1st Avenue
Broomfield, CO 80020



Eastern Region

Eastern Region Rally - April 30 - May 3, 2026

Coastal Georgia RV Resort
287 S. Port Pkwy
Brunswick, GA 31523

May



Eat What You Want Day Monday, May 11, 2026

Observed annually on May 11th, National Eat What You Want Day sets diets aside for a day of indulgence. It's about having one day a year of eating with no regrets!



Central Region

Lake Erie Travelers - May 14 - 16, 2026

Atwood Lake Park
9500 Lakeview Rd., NE
Mineral City, OH 44656

Looking Ahead: April, May, June
Celebrations and Regional Club Events

May



Southern Region

Texas Sojourners - May 24 - 27, 2026

Lagoon Ranch Luxury RV & Cabin Resort
150 Emerald Lane
Onalaska, TX 77360

Central Region

Minnesota Voyagers - May 15 - 16, 2026

Cannon Falls Campground
30365 Oak Lane
Cannon Falls, MN 55009



Central Region

Ebony Dream Makers - May 15 - 17, 2026

Lakeview RV Park & Cabins
N4475 Lodge Road
Chilton, WI 53014



Southern Region

Georgia Elite Fleet Club - May 22 - 24, 2026

Midpoint 195 RV Resort
356 W. Canal Road
Sellers, SC 29592



Eastern Region

The Innovators RV Club - May 22 - 28, 2026

Lakewood Camping Resort
5901 S. Kings Way
Myrtle Beach, SC 29575

May

Looking Ahead: April, May, June 2026 Celebrations and Regional Club Events



Memorial Day

Monday, May 25, 2026

Memorial Day is a federal holiday in the United States for mourning the U.S. Military personnel who died while serving in the United States Armed Forces. It is observed on the last Monday of May

Western Region

Funseekers/Rain City Travelers

May 28 - 30, 2026

Hee Hee Illahee RV Resort
4751 Astoria Street, NE
Salem, OR 97305



June



Leave the Office Early Day

Tuesday, June 2, 2026

Leave the Office Early Day is celebrated on June 2 each year encouraging employees to leave work early to promote relaxation and work-life balance. It was created to raise awareness about the benefits of shorter work hours and increased productivity.



Western Region Rally

June 2 - 7, 2026

Ko-Kwel RV Resort and Casino
3201 Tremont Avenue
North Bend, OR 97459

Central Region Rally

June 7 - 14, 2026

The Cardinal Center
616 State Rt. 61
Marengo, OH 43344



June

Looking Ahead: April, May, June Celebrations and Regional Club Events

Eastern Region

New Horizon RV Club - June 11 - 14, 2026

Carrollwoods RV Park & Vineyard
95 Dot Lane
Tabor City, NC 28463



Southern Region

Texas Sojourners - June 18 - 21, 2026

Stella Mare RV Resort
3428 Stella Mare Lane
Galveston, TX 77554

Central Region

Lake Erie Travelers - June 25 - 28, 2026

Baylor Beach Park (Grandkids Weekend)
8777 Manchester Avenue SW
Navarre, OH 44662



Western Region

Funseekers/Rain City Travelers - June 26 - 28, 2026

The Cedars RV Resort
6335 Portal Way
Fendale, WA 98248

National Camera Day

Monday, June 29, 2026

National Camera Day is celebrated on June 29 each year to honor the invention of the camera and the impact on capturing memories and moments. It's a day for photography enthusiasts to take photos, share them on social media, and appreciate the art of photography.

